

SWit 3.15, 27.4.07

After installation:

1. Open the following files in the installation folder and modify:

Save all these as ANSI txt (not as Unicode or something).

drawing_no_database.txt

Modify starting number to meet your needs, it can be ANY number like 0999, 999, 0029999 etc. Do NOT modify anything else in this file.

In the SWit itself you can use the “Get New”-button to read the next free drawing number from this “database”.

When you want to **move or rename** the current database file just move or rename the current one and SWit will ask you a new one when you run it next time.

profiles.txt

This one defines profiles that you want to use. Every profile can have different kind of settings.

2. Other txt-files that you can use (optional)

Designers.txt etc.

Names for designers. Modify to meet your needs.

There are actually quite many places where you can use predefined txt-files. You can set the txt-files within “Settings”-page. I didn’t include all these files because they can be created yourself in case you want to use them, just use the same “format” that Designers.txt is using. And remember to save them as ANSI txt.

Using SWit:

1. Start SolidWorks

You probably want to define a macro-button to start SWit from SolidWorks. So...

Open empty Part and modify included macro **Starter macro for SWit.swp** if you didn’t install SWit to the default folder. You can find the macro from the installation folder. Modify the SWit installation path with “Tools-Macro-Edit”.

Then add a button with “Tools-Customize-Commands-Macro”. There is a very cool picture included that you can use for the button, the file is named “SWit-button.bmp” ;-)

2. Start SWit with macrobutton!

When you are starting SWit for the **first time** it will ask you for the **drawing number database-file** and **LOCKING-file** (locker.txt).

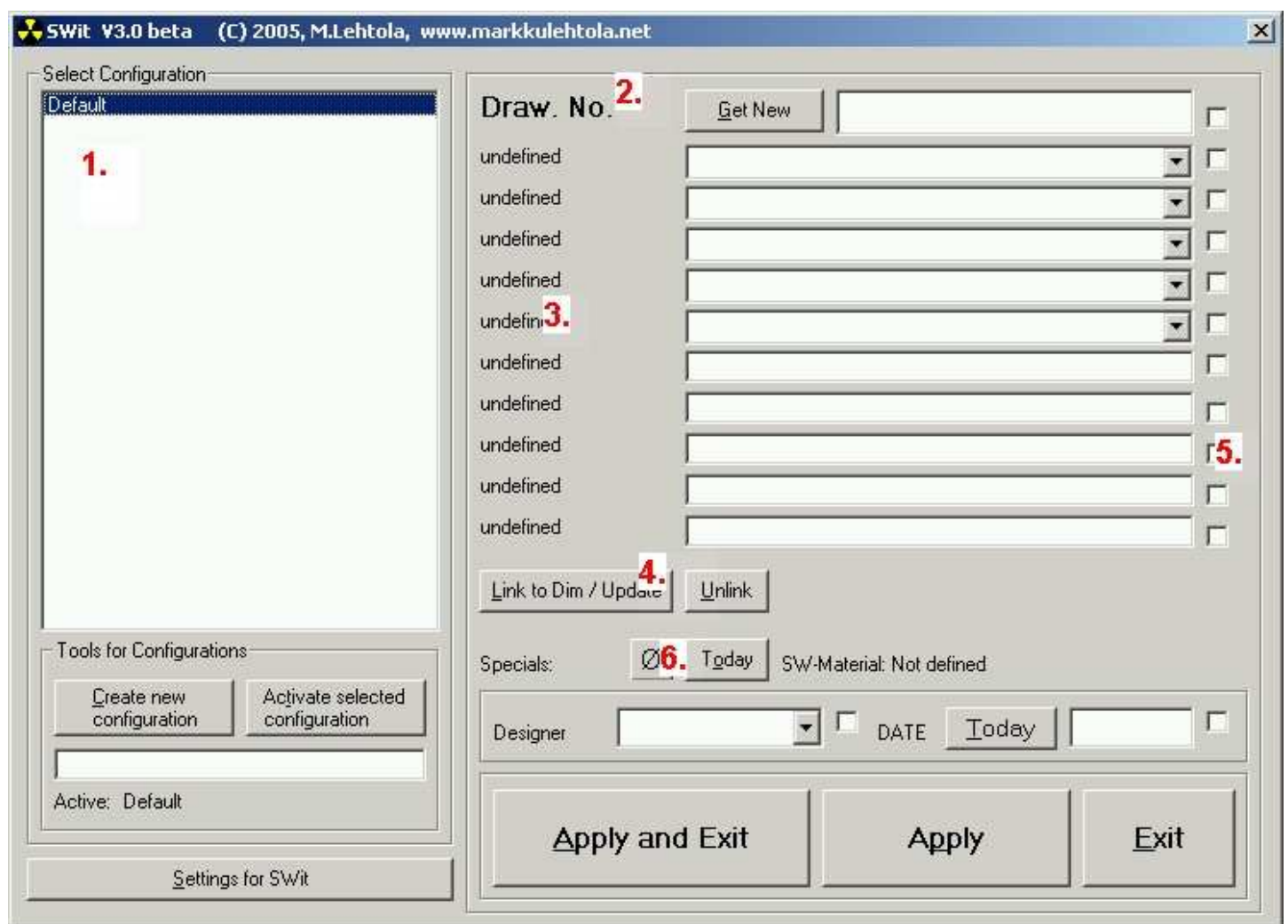
Common locking file (everybody are using the same locking file) will add a possibility to use the same draw.number database for several designers (for example over local network). To change these files rename or move them, SWit will ask for them next time you run it.

After these “one-time-only” settings you should use the “Settings”-page to modify little bit the user interface, Custom Property names, Drawing Number Format, Profiles and other settings.

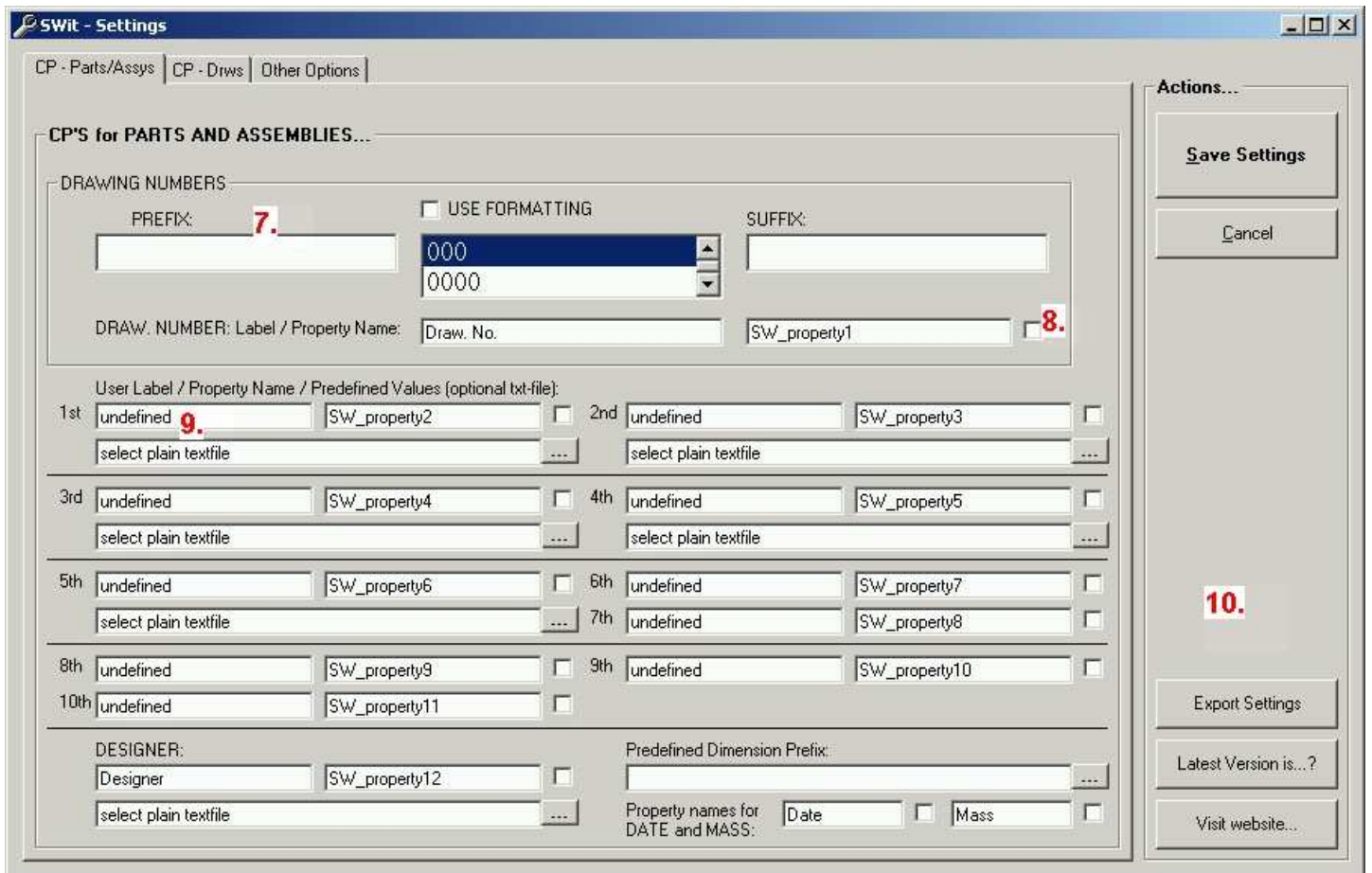
3. Creating SolidWorks drawing and BOM templates

If you are not familiar with Custom Properties and how to link the information to the drawings/bill of materials you should read about Custom Properties in SolidWorks Help.

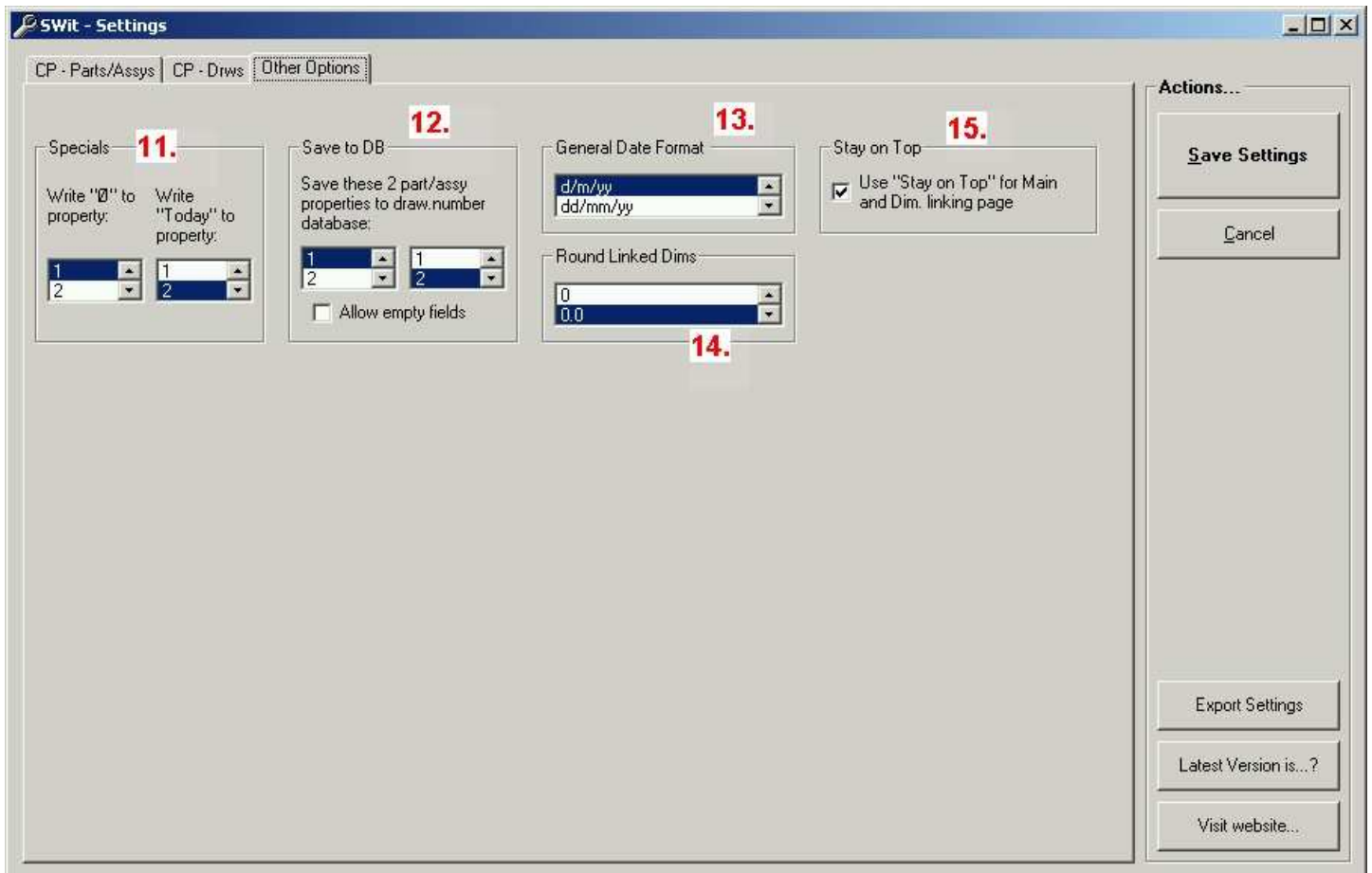
4. What are all these buttons for?



1. select right configuration to save attributes to
2. get next free drawing number from the “database”, define the look in Settings-page
3. labels for properties, define in Settings-page
4. dimension linking (using only configuration based attributes)
5. checkbox for saving the attribute to ALL configurations (be careful with this one)
6. “fast symbols”, define in Settings-page where to use these (these are added for property texts)



7. define prefix/formatting/suffix and property name for drawing numbers
8. select these checkboxes beside property name boxes if you want to use Custom Property attribute, NOT Configuration Specific attribute
9. user labels/property names for attributes, user label is shown only in SWit main window, property name is used with SolidWorks. 5 optional txt-files for main windows 5 first properties
10. tools; export settings, when upgrading SWit or moving settings from one pc to another, check the latest SWit version or visit the site. (in 3.1 there is also "Profiles"-button between Save Settings and Cancel to handle different profiles. You can use different settings for every profile).



11. where to write “fast symbols” (diameter/date) when button is pressed
12. what properties are written into the draw.number “database”
13. what kind of format Today-buttons are using
14. how to round linked dimensions
15. should main windows and dimension linking window stay on top of other windowses or not

Upgrading:

When new version of SWit is released and you want to install it do the following:

1. **Just run the setup** and SWit will be upgraded (“Export settings” is still recommended)...or:
2. **Save your settings** (very recommended) with “Export Settings”-button. This is using standard MS registry file to save all the settings to *.reg file
 - 2.A **Backup / Move** your drawing number database and other txt-files to safe place!!
 - 2.B **Uninstall** current version, this will remove SWit completely (also settings)!
 - 2.C **Install** new version
 - 2.D **Import settings** by doubleclicking the *.reg file that you saved earlier

Version history (compared to old version 2.2):

27.4.07, 3.15

Mass property attribute now really works ☺

12.12.06, 3.14

Mass property attribute was depending on one Windows Explorer setting – fixed.

12.5.06, 3.13

If you leave the attribute value totally empty, SWit will not write that property to the model (if you need empty attribute, you can use space). This makes SWit little bit faster and you can also avoid the problem when using same attribute name in custom side and configuration specific side (configuration specific data overrides custom data).

New button for reading the model info. If you change the active model while SWit is running you can read the data with this button without closing SWit.

11.1.06, 3.12

Some problems with form loading/unloading fixed.

19.12.05, 3.11

Couple bugs fixed that seemed to affect only XP users (well, at least nobody told me anything else). Main problem was with “Apply and Exit”-button that didn’t actually exit.

11.8.05, 3.1

Couple very minor bugs fixed.

14.7.05, 3.1 beta

Profiles. Easier upgrading to new version.

6.7.05, 3.0 beta

Support for Custom Property attributes. Better readme-file ☺

This software is free to use. No warranty of any kind...it's your own risk. Source code is NOT available (because I'm not a programmer and the code is horrible ☺). Tested mainly with SolidWorks 2005 sp5.0 / Windows 2000.

Please don't hesitate to contact me if you find a bug or if you have good suggestions or something else to discuss about regarding this software.

Best regards

©2001-2007 Markku Lehtola
Europe, Finland, Nummi-Pusula
ml@markkulehtola.net

